



### X2M-157

Capacity: 165L  
Shelves: 3 shelves  
Outside Dimension: W450xD452xH1045mm  
Internal Dimension: W448xD422xH870mm



### X2M-315

Capacity: 332L  
Shelves: 3 shelves  
Outside Dimension: W905xD452xH1045mm  
Internal Dimension: W903xD422xH870mm



### X2M-575

Capacity: 605L  
Shelves: 3 shelves  
Outside Dimension: W905xD800xH1045mm  
Internal Dimension: W903xD770xH870mm



### X2M-200

Capacity: 202L  
Shelves: 2 shelves  
Outside Dimension: W600xD672xH632mm  
Internal Dimension: W598xD642xH525mm



### X2M-400

Capacity: 411L  
Shelves: 3 shelves  
Outside Dimension: W600xD672xH1275mm  
Internal Dimension: W598xD642xH1070mm



### X2M-600

Capacity: 624L  
Shelves: 5 shelves  
Outside Dimension: W600xD672xH1815mm  
Internal Dimension: W598xD642xH1625mm



### X2M-1200-6

Capacity: 1250L  
Shelves: 5 shelves  
Outside Dimension: W1200xD672xH1815mm  
Internal Dimension: W1198xD642xH1625mm

## Options



1. Nitrogen Filling Module (QDN):  
Nitrogen inflow will stop as soon as the relative humidity reaches preset digital value. Nitrogen can be dramatically saved. Nitrogen does not need to be pumped in continuously.



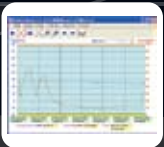
2. Nitrogen Flow Meter.



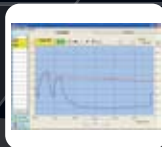
3. Data Logger & Reader:  
It can collect the humidity and temperature data and graph.



4. Door alarm.



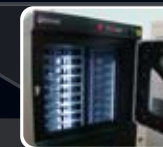
5. Humidity Manager V3:  
MSD floor life calculation, H/T record and graph, text output, curve output.



6. SensorLook V2:  
Humidity and temperature curve, flash and buzz alarm, upper and lower limit setting, monitor 4 sensors at the same time.



7. Grid Shelf with Divider.  
(for certain models only)

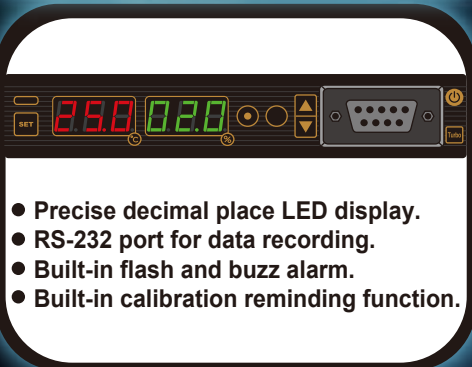


8. Internal light.

# <5%RH Ultra-Low Humidity Dry Cabinet

*Ultra-Low Humidity Storage Technology to comply with J-STD-033B.  
Best Drying, Storage and Monitoring Performance for MSD packages.*

## Humidity and Temperature display

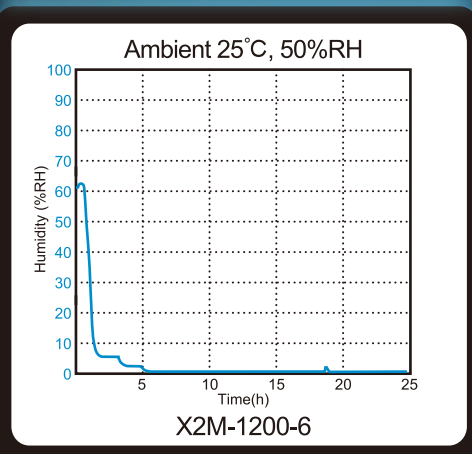


## Humidity Management

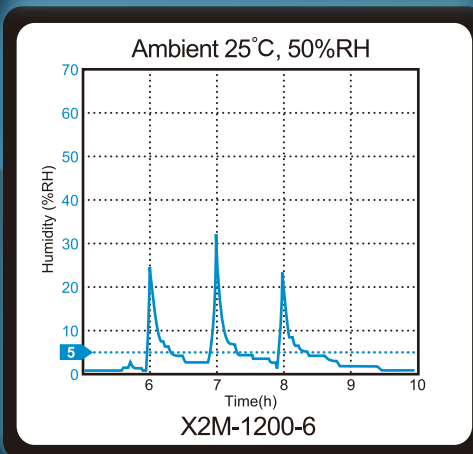


X2M dry cabinets are equipped with Humidity Manager V2 software to graph humidity and temperature curve.

## Performance



## Recovery Time



X2M series always reach <5%RH within 30 minutes after the door is opened and closed.



Humidity Range  
<5%RH

Humidity  
Management  
(RS232 port)

LED Display  
(precision:  
±1.0°C, ±3.0%RH)

Alarm Setting  
(flash, buzz)

Slash Door  
(for memo cards)

Antistatic Paint  
(black)

**X2M-1200-6**