

Electrovert®

Aquastorm® 50

The Aquastorm
50 batch cleaning
system offers in-line
technologies in a
batch footprint.

Matching Footprint to Application

Today's challenges for PCB manufacturers hinges on high density, increased complexity, and miniaturization. Manufacturers that currently clean with a batch-type cleaner are looking for a solution to increase cleaning capability without moving to an in-line cleaner. The Aquastorm 50 batch cleaner utilizes technologies that are common to the Aquastorm 100 and 200 in-line cleaners and offered in a batch footprint.

Patent Pending Fluid Delivery System

The objective of a mechanical fluid delivery system is to clean under difficult, low stand-off components by maximizing the physical energy delivered at the surface of the area to be cleaned. The Aquastorm 50 wash fluid delivery system utilizes multiple jet impact cleaning (JIC) sprays that create a web of omni-directional dynamic energy to remove flux residue. The web (or storm) of mechanical fluid energy that is created delivers the dynamic energy required to achieve higher product reliability by effectively removing flux residues under the low stand-off components.

Intelligent Rinse Control

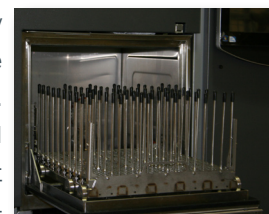
The Intelligent Rinse Control feature guarantees desired conductivity of rinse water through continuous monitoring and control of the rinse process while maximizing water conservation. Each cycle can be user defined by cleanliness of rinse water (board cleanliness of 1 μ S) or by the number of cycles.

Patented Torrid Zone® Drying

The Torrid Zone drying that has set the industry benchmark for drying on in-line cleaners is a standard feature on the Aquastorm 50. Our patented convection drying technologies for cleaning applications delivers a controlled dynamic process that effectively removes moisture from the PCB. Typical performance includes drying complex assemblies to within .1g of prewash weight. A benefit of Torrid Zone drying is that completely dry PCB's can go straight to test after cleaning.

Effluent Management

The Aquastorm 50 has been designed with features to minimize effluent discharge. The technologies include: closed loop wash, chemical isolation, and our closed loop rinse feature with on-board rinse DI water generation. An optional evaporator or high volume filtration media are offered for zero-discharge to drain applications.



WORLD HEADQUARTERS

16 Forge Park, Franklin, MA 02038
Tel: (508) 520-0083
Fax: (508) 520-2288

www.speedlinetech.com

MANUFACTURING FACILITIES

ACCEL/ELECTROVERT
1620 Old South 5
Camdenton, MO 65020
Tel: (573) 346-3341
Fax: (573) 346-5554

CAMALOT/MPM

16 Forge Park, Franklin, MA 02038
Tel: (508) 520-0083
Fax: (508) 520-2288

SALES AND CUSTOMER SUPPORT OFFICES MEXICO

Carretera Base Aerea #5850
Km. 5, Edificio 11
Zapopan, Jalisco, Mexico
Tel: +52 (3) 818-9017
Fax: +52 (3) 818-9816

EUROPE

Speedline Technologies GmbH
Im Gefierth 14
D-63303 Dreieich, Germany
Tel: +49 (0) 6103-8320
Fax: +49 (0) 6103-832-299

ASIA/PACIFIC

Speedline Technologies Asia Pte Ltd
132 Joo Seng Road, #03-01 Uniplus Bldg.
Singapore 368358
Tel: +65-6286-6635
Fax: +65-6289-9411

© 2012 Speedline Technologies. All rights reserved.

Aquastorm, Torrid Zone, Speedline, Electrovert, Accel, Camalot, MPM, and Protect are trademarks of Speedline Technologies or its affiliates and subsidiaries. Windows is a registered trademark of Microsoft Corporation.

002 07/12



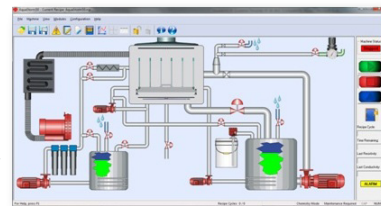
Durable Design

The brand name of Electrovert holds the reputation of having the 'longest product life cycle' within the Electronic Equipment Manufacturers' industry. The reputation holds true for the Aquastorm 50. While typical batch cleaners are modified versions of residential dishwashers, the Aquastorm 50 utilizes field-proven technologies that are common across the Aquastorm in-line cleaners. The fluid delivery designs, pump designs, and drying technologies are shared across the Aquastorm in-line series. These designs are field proven in demanding production environments yet provide commonality for easy training across multiple Electrovert platforms.



Advanced User Interface

The software has an advanced user interface that utilizes a 21" touch screen PC with Windows® 7 operating system. All machine operation parameters are easily viewed to optimize the machine and process controls. The software GUI is common across all Electrovert cleaning, wave, and reflow product lines. The benefit is that all machine operations, controls, set-up, drop-down menus, and timer functionalities are similar and easy to use.



World Wide Support

The employees of Electrovert are dedicated to providing world class service and support to our global partners. With facilities in the USA, Mexico, Europe, Asia and an extensive network of service, applications, and process engineers, Electrovert is positioned to support our customer's requirements. All Electrovert cleaning, wave, and reflow equipment are designed and built in Camdenton, Missouri USA.

Contact your local sales representative to learn more about the Aquastorm 50.

AQUASTORM 50 SPECIFICATIONS

Machine Dimensions (DxWxH)	969 mm (38.1 in) x 1527 mm (60.1 in) x 1826 mm (71.9 in)
Cleaning Dimensions	508 mm (20 in) x 457 mm (18 in) maximum board size in basic basket
Exhaust Requirements	(Qty 1) 101 mm (4 in) static port (no vacuum or exhaust blower required)
Standard Utility Requirements	480 VAC, 3 phase, 60Hz, 40 Amps 380 VAC, 3 phase, 50Hz, 47 Amps 230 VAC, 3 phase, 60Hz, 81 Amps 208 VAC, 3 phase, 60Hz, 122 Amps
Drain Plumbing Requirements	(Qty 1) 1-1/2 in MNPT
Supply Water Requirements	(Qty 1) 1/2 in MNPT of 15.1 l/min (4 gpm) at 50 psi with 49 °C (120 °F) deionized water
Air Supply Requirements	379-586 kPa (55-85 psi) at 28 SCFM (intermittent)

ABOUT SPEEDLINE TECHNOLOGIES

Speedline Technologies is the global leader in process knowledge and expertise for the PCB assembly and semiconductor industries. Based in Franklin, Massachusetts, U.S.A., the company markets five best-in-class brands — Accel microelectronics cleaning equipment; Camalot dispensing systems; Electrovert wave soldering, reflow soldering, and cleaning equipment; MPM stencil and screen printing systems; and Protect global services, support, and training solutions. For more information, visit us at www.speedlinetech.com.

Speedline Technologies maintains an ongoing program of product improvement that may affect design and/or price. We reserve the right to make these changes without prior notice or liability.